

Vba32 InstallTuner

USER GUIDE

Copyright © 2005-2006 VirusBlokAda Ltd.

Documentation version: 1.1 (September 2006)

All rights reserved. All contents, graphics and texts, in this documentation are the property of VirusBlokAda Ltd. No part of this documentation may be reproduced in any form or by any means, including online and offline publications, without written permission from VirusBlokAda Ltd.

Microsoft® and Windows® are registered trademarks of Microsoft Corporation.

All other company and product names may be trademarks of the respective companies with which they are associated.

VirusBlokAda Ltd.

Kalvarijskaja Str., 17, 611

220004 Minsk, Belarus

Tel.: (+375 17) 226-62-85 - Sales department

Tel.: (+375 17) 226-85-55 - Programming department

E-mail: support-en@anti-virus.by

VirusBlokAda may make improvements or changes in the product described in this documentation at any time. The latest version of the documentation is available on the developer's web-site:

<http://www.anti-virus.by/en/>

Contents

1. INTRODUCTION	4
2. PREPARING FOR MODIFICATION OF VBA32 INSTALLATION PACKAGES	5
3. USING VBA32 INSTALLTUNER	6
STEP 1 – WELCOME TO VBA32 INSTALLTUNER	6
STEP 2 – INSTALLATION PACKAGE SELECTION	7
STEP 3 – DESTINATION FOLDER.....	8
STEP 4 – SELECT FEATURES	9
STEP 5 – ADDITIONAL OPTIONS.....	10
STEP 6 – DATA IMPORT	11
STEP 7 – REMOTE ADMINISTRATION AGENT	12
STEP 8 – READY TO START MODIFICATION	13
STEP 9 – MODIFYING INSTALLATION PACKAGE	14
STEP 10 – EXECUTION FINISHED SUCCESSFULLY.....	14
4. HIDDEN INSTALLATION	16
5. APPENDIX	17
APPENDIX A. VBA32 FEATURES.	17

1. Introduction

Vba32 InstallTuner allows you to perform delicate tuning of Vba32 installation packages based on the Microsoft® Windows® Installer technology.

Vba32 InstallTuner provides:

- Changing by default destination folder for installation.
- Changing a typical set of installing Vba32 features.
- Changing additional options of installation (autorun parameters, creation of desktop shortcuts and group in the «Start» menu).
- Specifying reboot parameters for installation completion.
- Importing current Vba32 settings into an installation package.
- Importing Scanner configuration file into an installation package.
- Importing a registration key into an installation package.
- Importing Remote Administration Agent configuration file into an installation package.

2. Preparing for modification of Vba32 installation packages

First of all, you should decide which installation packages you want to modify.

The following Vba32 products can be modified by **Vba32 InstallTuner**:

- Vba32 Workstation 3.11.x (vba32workstation-3.11.x-**language**.msi)
- Vba32 Server 3.11.x (vba32server-3.11.x-**language**.msi)
- Vba32 Personal 3.11.x (vba32personal-3.11.x-**language**.msi)

The following installation languages are available:

- English (**language**=english)
- Russian (**language**=russian)
- Belarussian (**language**=belarusian)
- German (**language**=german)

Vba32 installation packages can be downloaded free from the following links:

<ftp://www.anti-virus.by/pub/>

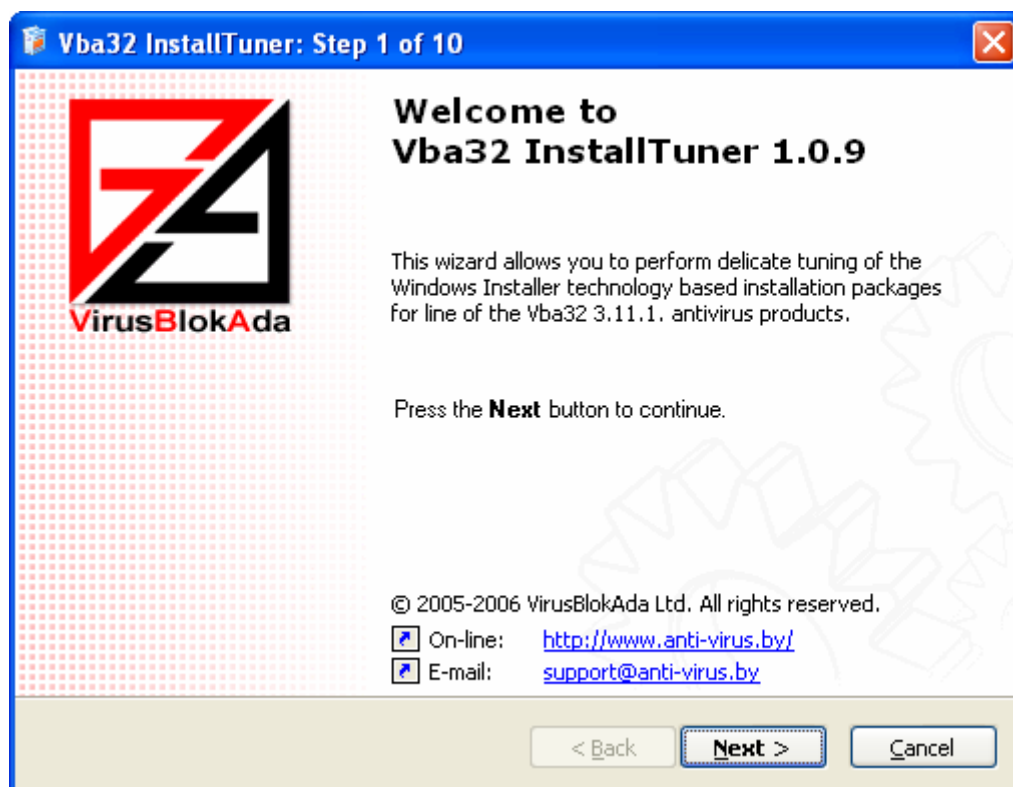
<ftp://ftp.vba32.de/pub/>

<ftp://www.open.by/vba/>

3. Using Vba32 InstallTuner

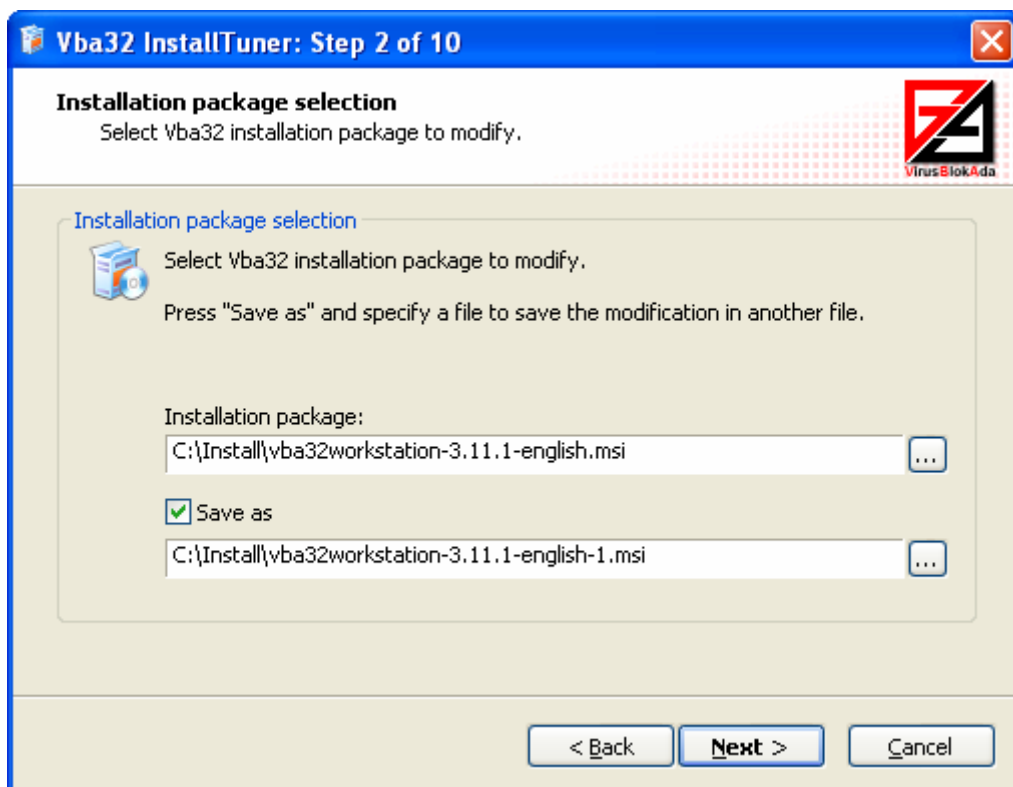
Vba32 InstallTuner is designed as standard Windows wizard and provides user with the instinctively intelligible interface. The interaction with the program is divided into 10 steps. In the result after performing it you will obtain modified Vba32 installation package which will satisfy your requirements in the best way.

Step 1 – Welcome to Vba32 InstallTuner

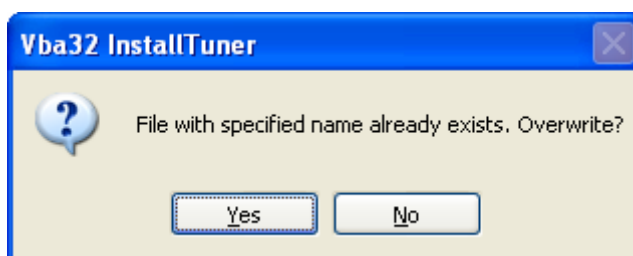


You can learn about program purpose in the Welcome window. Press the «Next» button to proceed to the next step.

Step 2 – Installation package selection

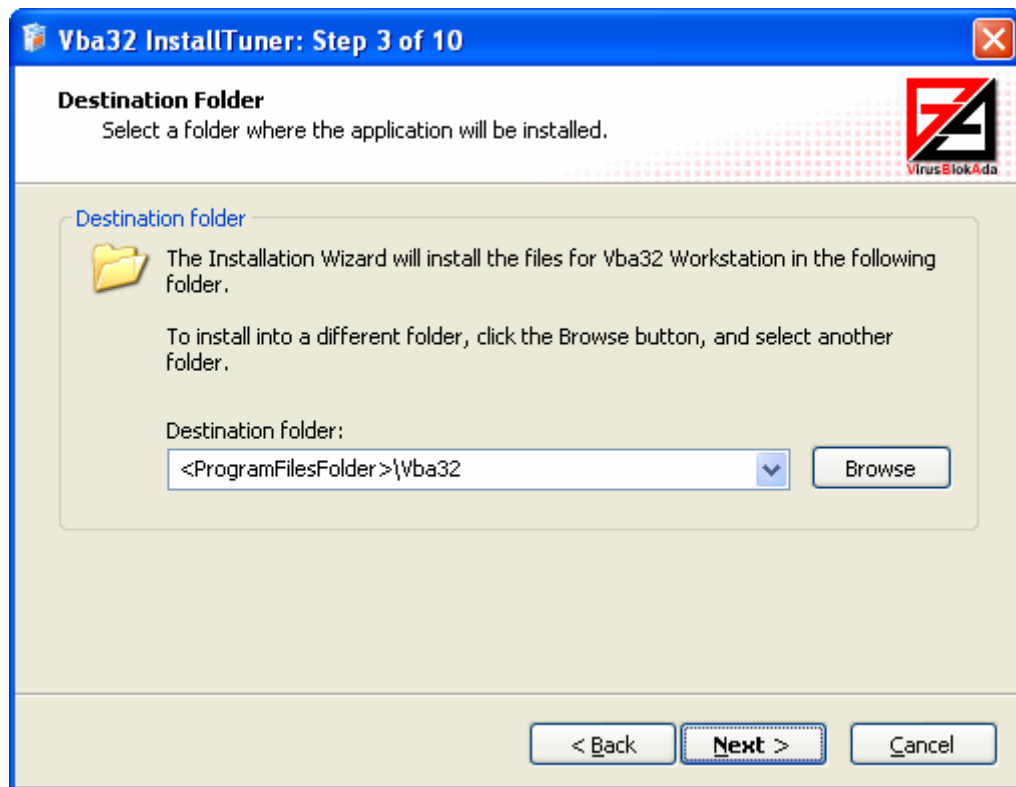


Select Vba32 installation package to modify. Press «Save as» and specify a file to save the modification in another file. If the file with specified name already exists, after pressing the «Next» button it will be proposed to rewrite it or cancel the proceeding to the next step.



Press «Yes» if you want to overwrite existing file. Press «No» if you want to change the filename of modified installation package.

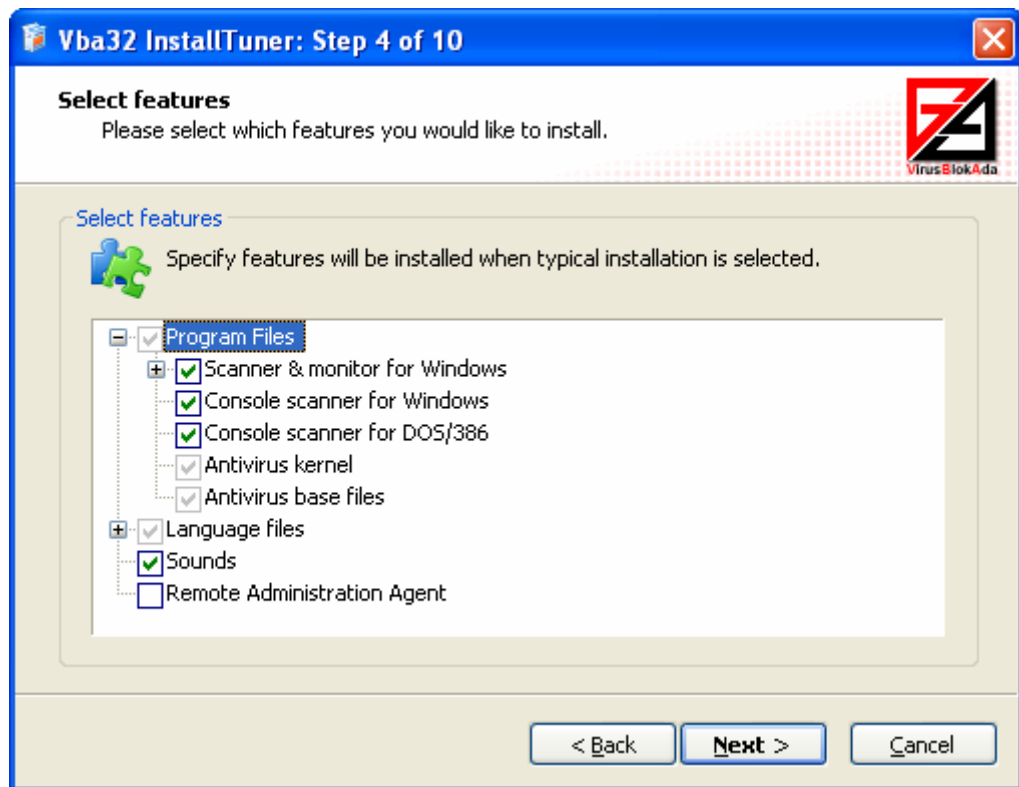
Step 3 – Destination folder



Destination folder selection allows you to change by default destination folder to install files in an installation package. Press the «Browse» button and specify a different folder or enter a path manually to apply the change of by default destination folder.

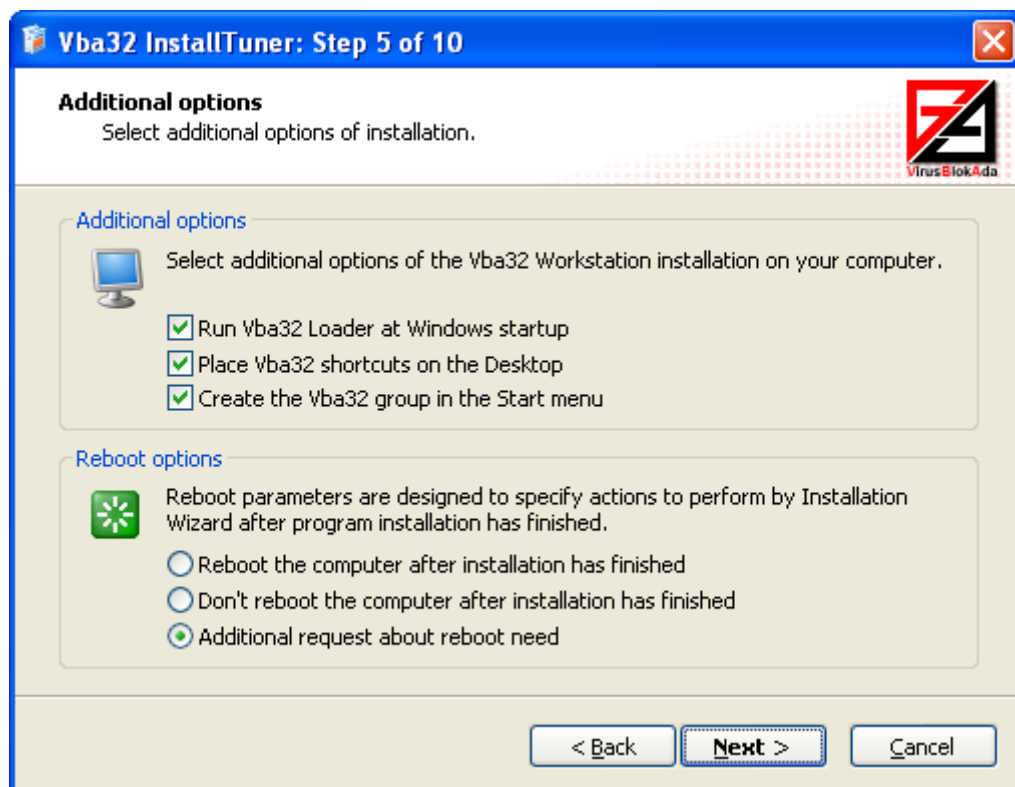
You can also specify a relative path to a destination folder by using the <ProgramFilesFolder> macro. It will be expanded into full path to the Program Files folder on user's computer.

Step 4 – Select features



You can modify set of features the «Typical» installation contains. For that, select the features you want to be installed during the «Typical» installation and unselect the others.

Step 5 – Additional options



You can select additional options of the Vba32 installation as well as reboot parameters of the installation program after successful execution.

Additional options:

- Run Vba32 Loader at Windows startup
- Place Vba32 shortcuts on the Desktop
- Create the Vba32 group in the Start menu

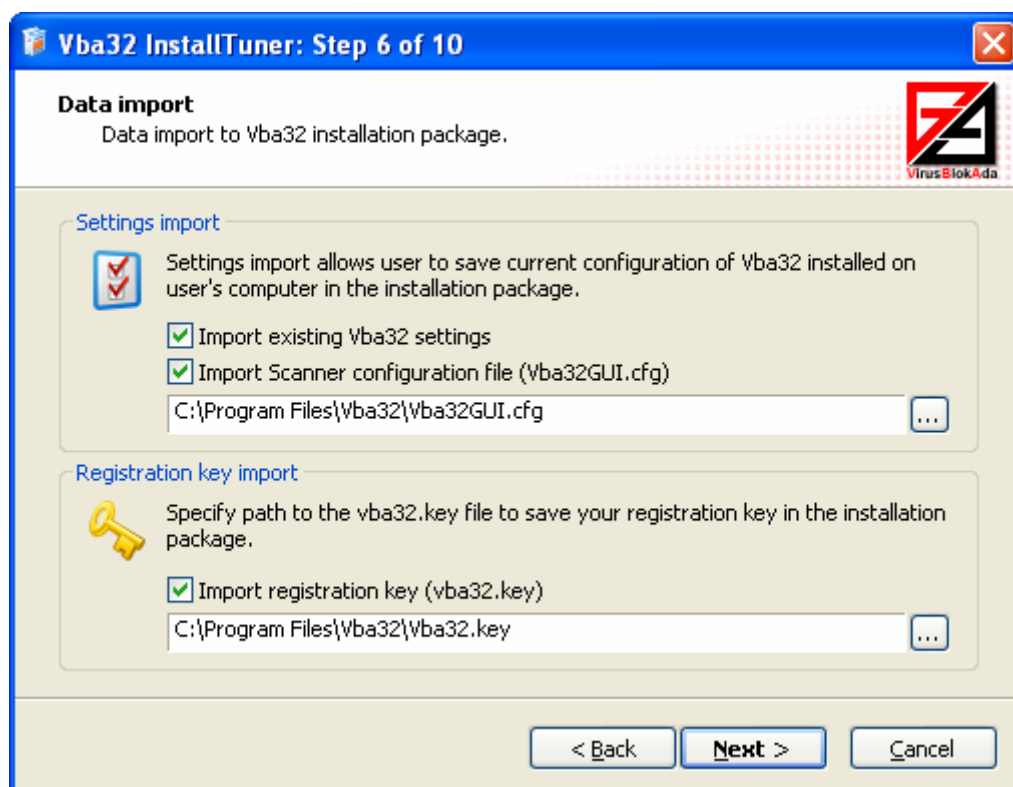
Additional options of installation allow you to tune autorun parameters and the creation of shortcuts on the Desktop and in the "Start" menu.

Reboot parameters:

- Reboot the computer after installation has finished
- Don't reboot the computer after installation has finished
- Additional request about reboot need

Reboot parameters allows you to define actions to perform by Installation Wizard after the installation has finished. Provided you use the hidden installation (see "4.Hidden installation"), this option can prevent a user from unexpected computer reboot.

Step 6 – Data import



Data import allows you to create Vba32 installation packages with saved current configuration of Vba32 installed on your computer. In future when using installation packages modified by Vba32 InstallTuner you will obtain fully tuned Vba32. It helps in reducing your time wastes for antivirus protection implementation.

Import existing Vba32 settings

Existing Vba32 settings import allows you to create installation packages with current settings of Vba32 installed on your computer. In future after Vba32 installation package with imported settings will have been installed you will obtain already fully tuned Vba32.

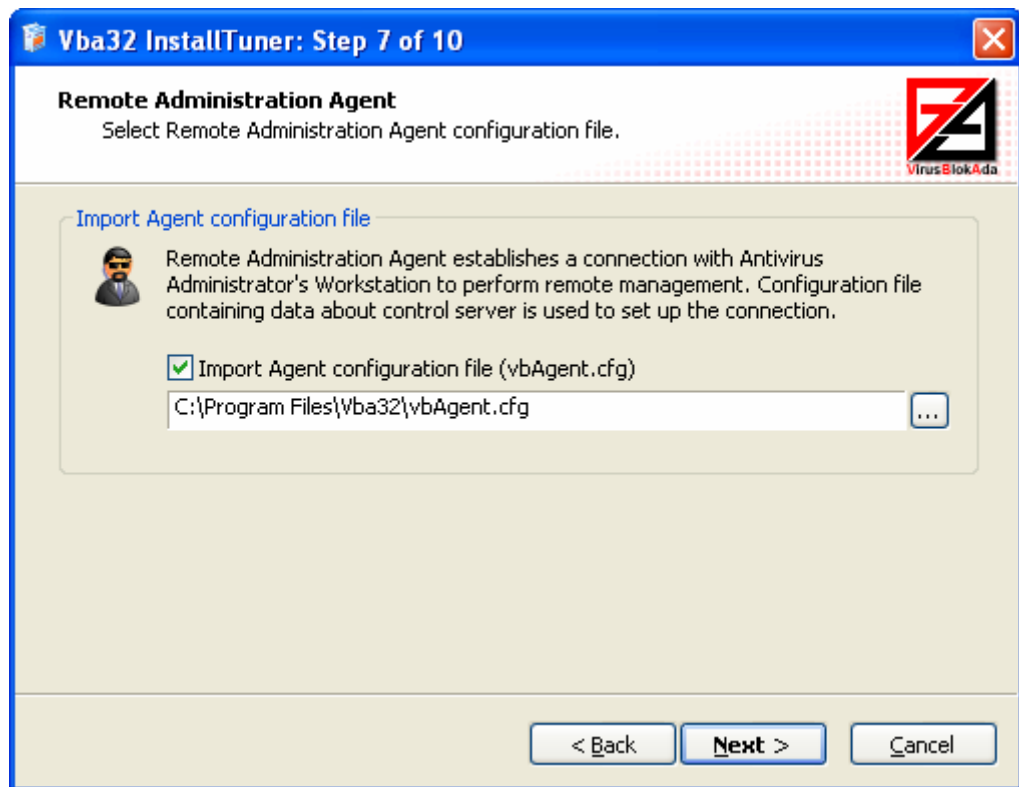
Import scanner configuration file (Vba32GUI.cfg)

Scanner configuration file import allows you to add preformed Vba32 Scanner configuration file in an installation package.

Import registration key (vba32.key)

Vba32 will be in demo-mode without a registration key. You can add your registration key in an installation package to prevent it from being accidentally deleted or modified.

Step 7 – Remote Administration Agent

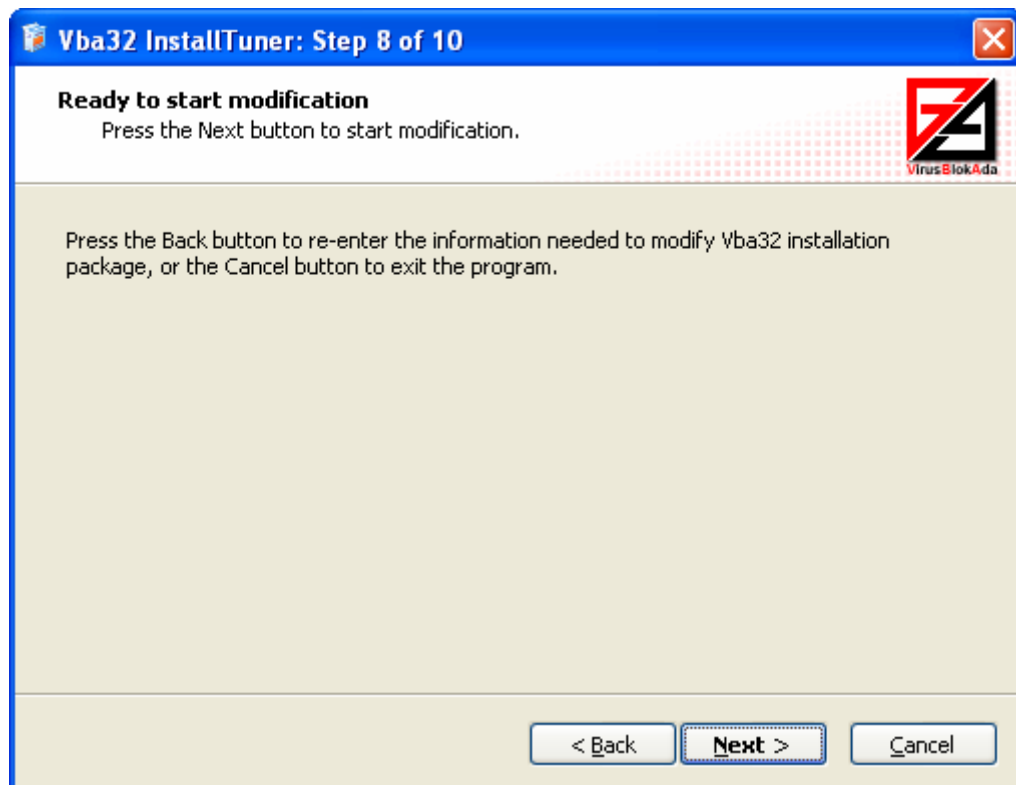


Remote Administration Agent provides a connection with AAW to perform remote management. Configuration file containing information about management server is used to establish the connection.

Import Agent configuration file (vbAgent.cfg)

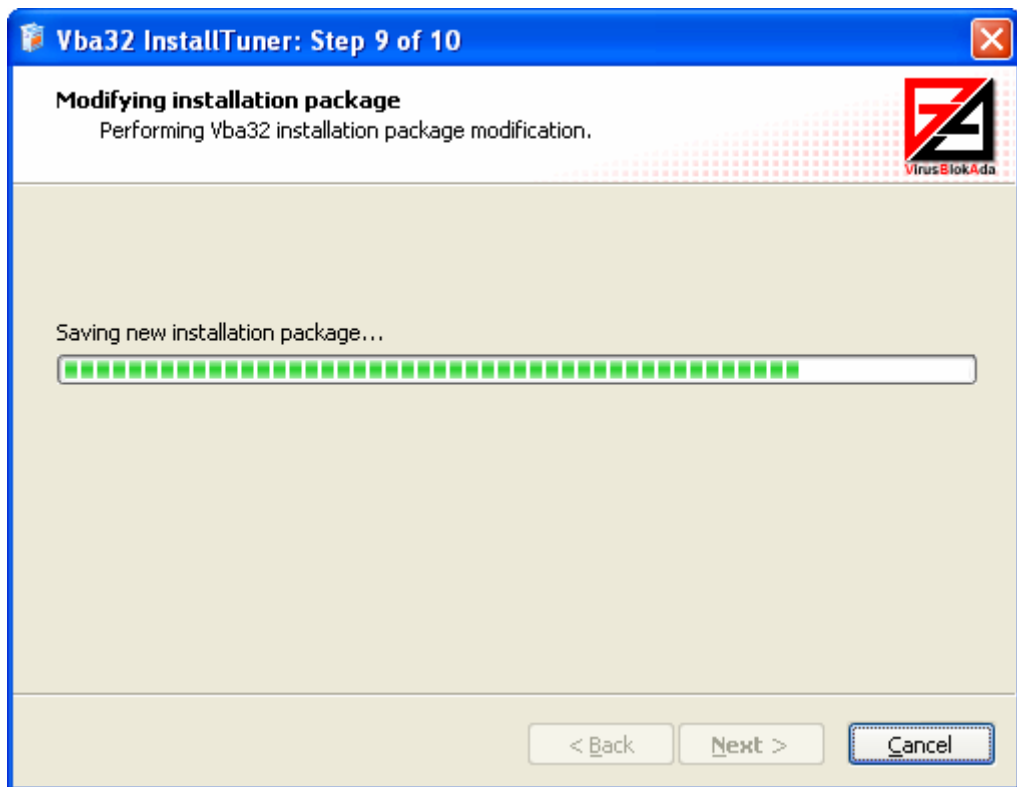
Agent configuration file import allows you to add preformed Remote Administration Agent configuration file in an installation package.

Step 8 – Ready to start modification



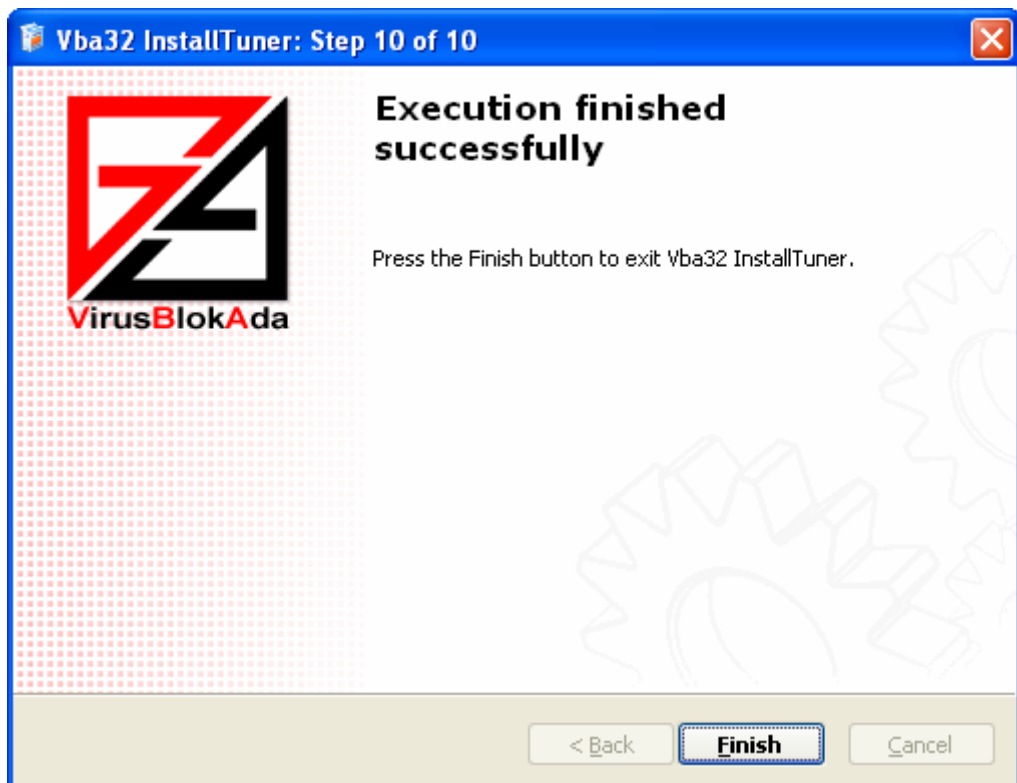
Press the «Back» button to return to previous steps and re-enter the information needed to modify Vba32 installation package. Press the «Next» button to start modification of installation package.

Step 9 – Modifying installation package



You can observe the state of installation package modification and performing actions.

Step 10 – Execution finished successfully



Vba32 InstallTuner has finished modification of specified installation package successfully.
Now you can use it to install Vba32 on your computer.

4. Hidden installation

Installation can be performed in the hidden mode without graphic interface. Obviously this method is used to install Vba32 on users' computers automatically. To run installation program in the hidden mode, use the **/qn** command line parameter.

For example:

```
msiexec /i vba32workstation-3.11.1-english.msi /qn
```

5. Appendix

Appendix A. Vba32 features.

Vba32 feature	Vba32 Workstation		Vba32 Server		Vba32 Personal	
	Windows 95/98/Me	Windows NT/2000/XP/2003	Windows 95/98/Me	Windows NT/2000/XP/2003	Windows 95/98/Me	Windows NT/2000/XP/2003
Vba32 Loader	+	+	+	+	+	+
Vba32 Monitor	+	+	+	+	+	+
Vba32 Scanner	+	+	+	+	+	+
Console scanner for Windows	+	+	+	+	–	–
Console scanner for DOS/386	+	+	+	+	–	–
Windows Explorer context menu extension	+	+	+	+	+	+
Antivirus POP3-filter	+	+	–	–	+	+
Antivirus plug-in for Microsoft Outlook	+	+	–	–	+	+
Antivirus plug-in for The Bat!	+	+	–	–	+	+
Antivirus Script-filter	+	+	–	–	+	+
Antidialer	–	+	–	–	–	+
Antivirus quarantine	+	+	+	+	+	+