

Vba32 Remote Installation **Administrator guide**



VirusBlokAda

Copyright © 2003-2007 VirusBlokAda Ltd.

Documentation version: 1.1 (October 2007)

All rights reserved. All contents, graphics and texts, in this documentation are the property of VirusBlokAda Ltd. No part of this documentation may be reproduced in any form or by any means, including online and offline publications, without written permission from VirusBlokAda Ltd.

Microsoft® and Windows® are registered trademarks of Microsoft Corporation.

All other company and product names may be trademarks of the respective companies with which they are associated.

VirusBlokAda Ltd.

Kalvarijuskaja Str., 17, 611

220004 Minsk, Belarus

Tel.: (+375 17) 226-62-85 - Sales department

Tel.: (+375 17) 226-85-55 - Programming department

E-mail: support@anti-virus.by

WWW: www.anti-virus.by

VirusBlokAda may make improvements or changes in the product described in this documentation at any time. The latest version of the documentation is available on the developer's web-site:

<http://www.anti-virus.by/>

About this guide

This guide is designed to be used by administrators of antivirus protection. It describes how to use **Vba32 Remote Installation** utility.

Contents

| | |
|--|---|
| 1. Introduction..... | 5 |
| 2. System requirements..... | 6 |
| 3. Preparations | 7 |
| 4. Using Vba32 Remote Installation | 8 |

1. Introduction

Vba32 Remote Installation is designed for centralized installation or removal of **Vba32** antivirus on network computers.

Maximum number of computers, on which the installation can be performed simultaneously, is 1000.

2. System requirements

Vba32 Remote Installation can be run under the Windows NT operating systems that aren't older than Windows 2000 Service Pack 2, Windows XP, Windows 2003 Server. It's recommended to use Windows 2000 SP4, Windows XP SP2, Windows Server 2003 SP1 or greater.

Computers have to meet the following system requirements to perform remote installation on them:

- Operating system: Windows NT4.0/2000/XP/2003;
- Internet Explorer 5.0 or greater;
- If a firewall is used a connection to port 445 (DCOM) should be allowed. Provided a firewall integrated into Windows XP SP2 or Windows 2003 Server is used, all necessary permissions can be set by the following command line: «netsh firewall set service type=remoteadmin mode=enable scope=all profile=all»;
- For Windows NT 4.0: WMI (Windows Management Instrumentation) package should be installed, vendor – Microsoft Corporation;
- For Windows NT 4.0: Windows Scripting Host should be installed;
- For Windows XP: Simple File Sharing should be disabled on computers which don't belong to a domain.

Vba32 Remote Installation doesn't support the Windows 9x operating systems. To perform remote installation on such computers, logon-scripts at the domain controller can be modified so as the installation is performed automatically when users are logging on the domain.

3. Preparations

The following preparations should be made before using the utility:

- **Vba32** installation package created as Microsoft Installer (MSI-package). It's recommended to use a package configured for specific needs of an enterprise by **Vba32 Install Tuner** utility (see **Vba32 Install Tuner** documentation to get detailed information);
- List of computers the installation will be performed on. This is a text file containing lines with the names or IP-addresses of computers. Computer names should be delimited by a line feed.

4. Using Vba32 Remote Installation

Vba32 Remote Installation is a wizard, which performs specific actions or requests input data from an administrator on every step.

The first screen of the utility is a welcome one. After pressing the **Next** button the second screen is invoked. One of two actions to be performed by the utility can be selected – the installation or removal of **Vba32** on remote computers (fig. 1).

If **Install Vba32** is selected the path to a Vba32 installation package should be specified. It can be performed either by entering the path to the corresponding text field or by using the «...» button.

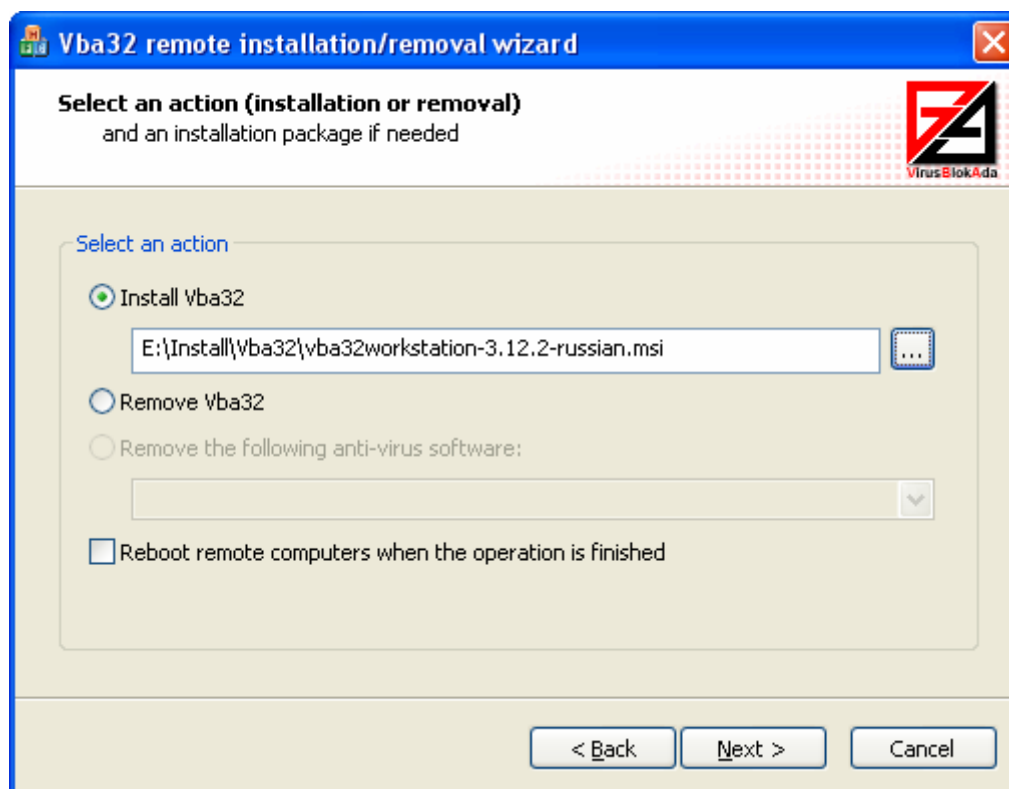


Figure 1 – Selecting actions to be performed by Vba32 Remote Installation

Invalid installation package warning is invoked if the selected package isn't **Vba32** one.

Checkbox «**Reboot remote computers when the operation is finished**» forces remote computers to reboot after the installation / removal of **Vba32** is complete.

Note: reboot is needed for **Vba32 Monitor** to start function correctly.

If you check this checkbox, a prompt with warning will appear. Press the **Yes** button if you are sure you want to force reboot remote computers.

Attention! User will not be warned of the following reboot. If there are any opened documents at the remote computer, changes will be lost. Computer will be rebooted immediately after installation / removal complete.

After an action has been selected (and installation package has been specified if needed), press the **Next** button to proceed to the next step (fig. 2).

The path to a file containing a list of computers the installation will be performed on should be specified there. The «...» button can be used.

Attention! Maximum number of computers that can be affected within a procedure is 1000. If a file contains more computer names a user will be warned.

Press the **Next** button to proceed.

Note: to switch to any previous step and change applied settings, press the **Back** button

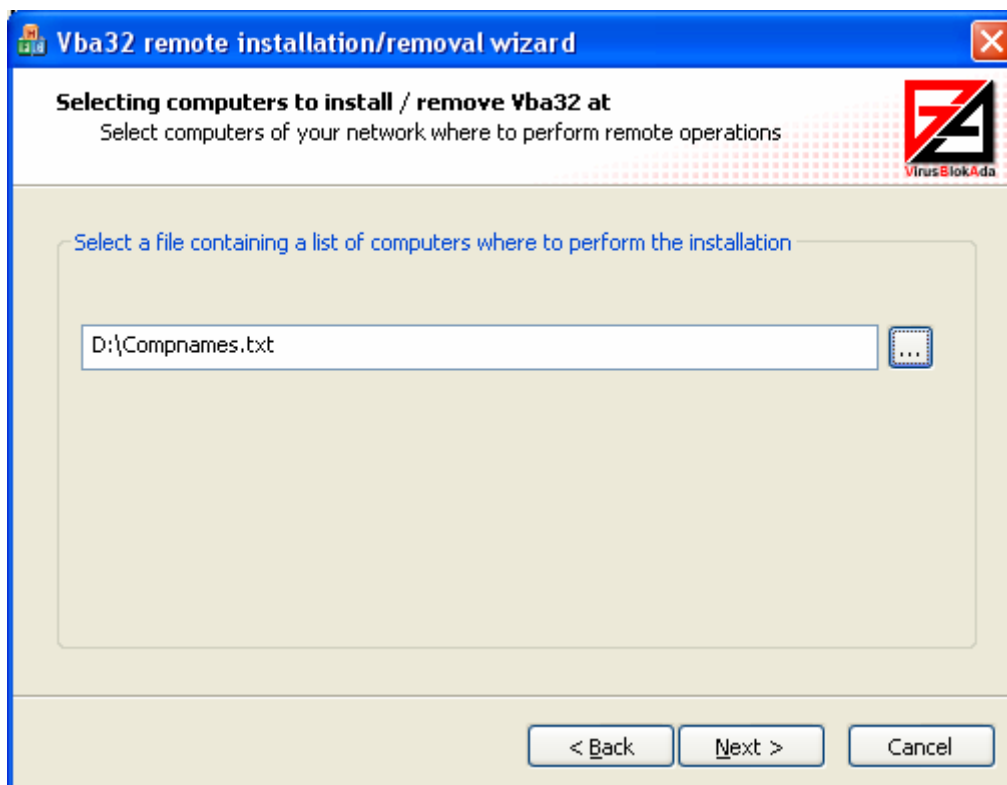


Figure 2 – Specifying a file with list of computers

The next step is to enter administrator password to access remote computers (fig. 3). One password is used for every computer (e.g. it can be domain administrator password if network structure is domain-based). Also, it's possible to enter domain name.

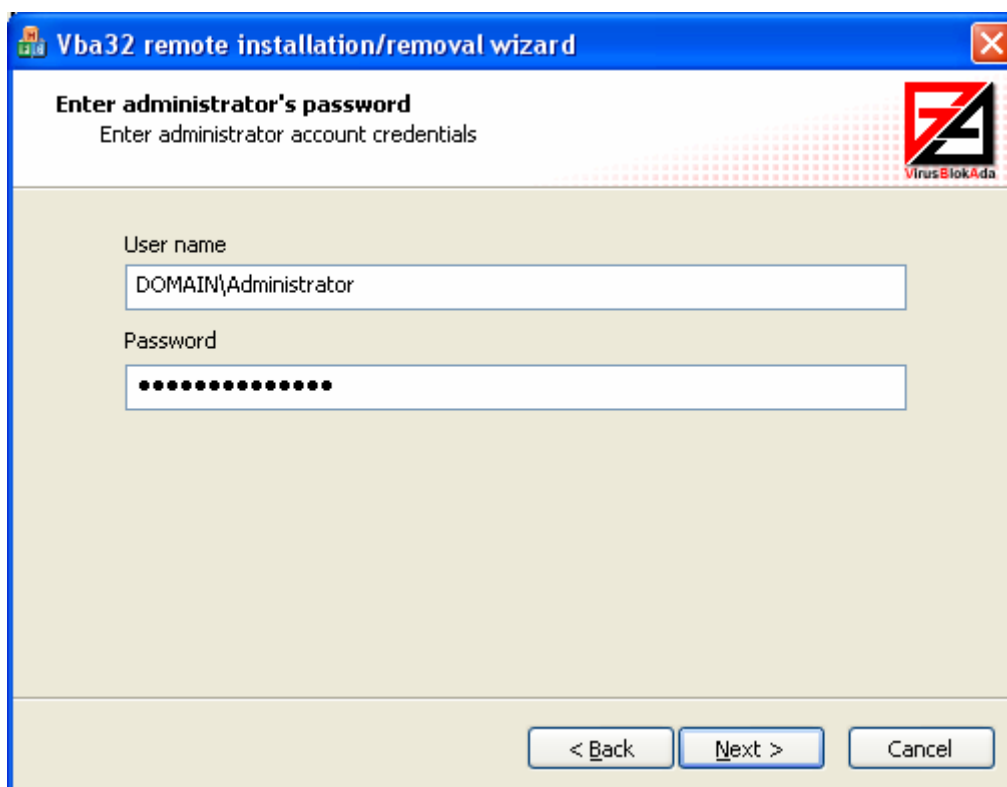


Figure 3 –Specifying administrator password

Press the **Next** button to begin the installation / removal of **Vba32** on remote computers.

Figure 4 displays the next step of the wizard. The progress bar and messages in the view list help in controlling the installation process.

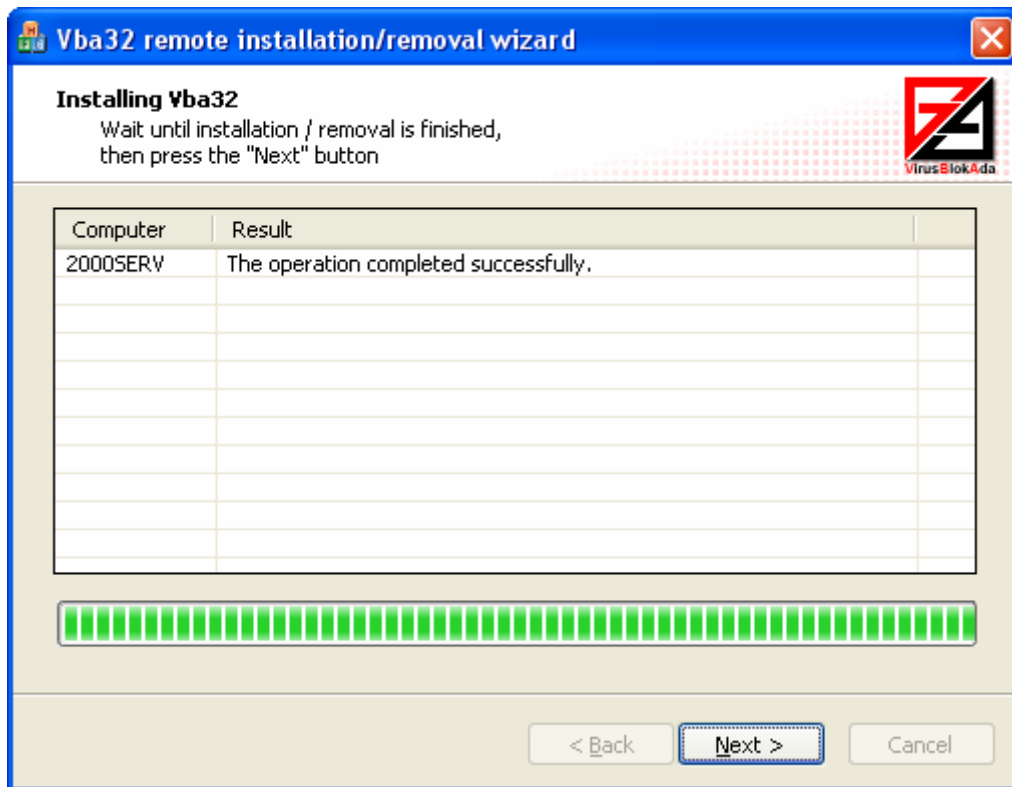


Figure 4 – Remote installation is in progress

There may be messages within the progress notifying of errors that has been occurred during the installation. Depending on the installation results the last wizard step (fig. 5) will inform a user of successful or unsuccessful execution of the wizard on the whole.

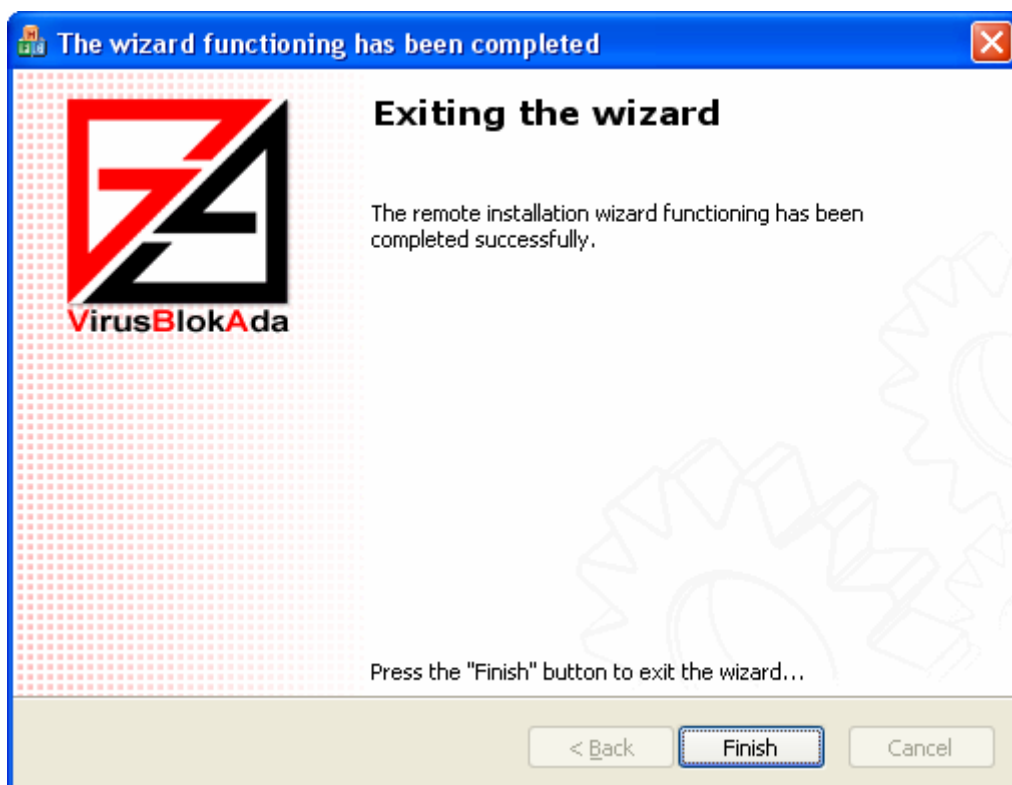


Figure 5 – Finishing wizard execution

Report files are kept by the utility on remote computers. File names are the following:

- *%WINDIR%\Temp\vba32install.log* (in case of installation)

or

- *%WINDIR%\Temp\vba32uninstall.log*,

where *%WINDIR%* stands for Windows installation folder on a remote computer. The reports may help in solving any problems that have been occurred during the installation.